

# ModuSpec Argus

The real-time monitoring system of a subsea blowout preventer (BOP).

ModuSpec is one of the longest-established, best-known providers of compliance and verification services globally. Our technical expertise and delivery are well regarded in the industry and our portfolio now includes real-time monitoring. Introducing, ModuSpec Argus.

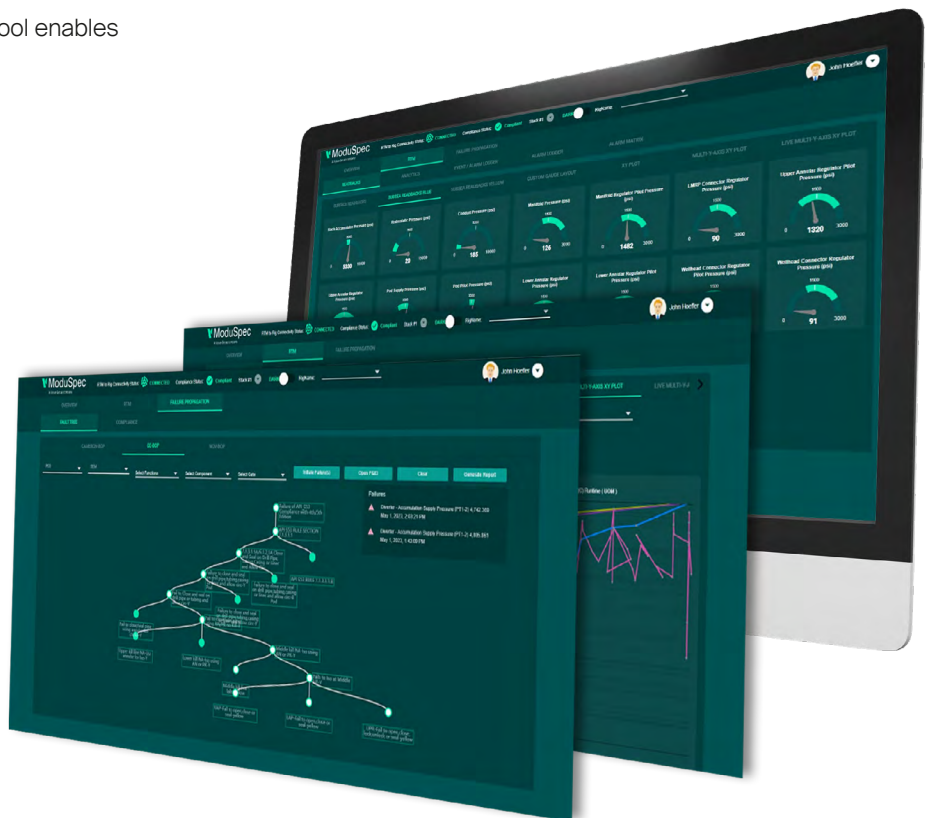
## Value proposition

Provides unparalleled safety and operational benefits.

Real-time monitoring and monitoring personnel can detect abnormalities, prevent potential blowouts or catastrophic events, minimize downtime and reduce environmental damage. By constantly tracking critical data such as hydraulic pressure, valve position, and temperature, operators can quickly detect any abnormalities and take immediate action to prevent potential blowouts or other catastrophic events.

ModuSpec Argus' real-time monitoring tool enables more efficient maintenance scheduling and predictive maintenance, leading to reduced costs and increased asset availability. Overall, investing in real-time monitoring for BOPs and well control equipment is a smart and effective way to enhance safety, reduce risk, optimize operations, extend pressure testing windows and comply with country specific regulations. Specifically, ModuSpec Argus is CFR compliant for 14-21 testing extension.

ModuSpec Argus' real-time monitoring tool enables more efficient maintenance scheduling and predictive maintenance, leading to reduced costs and increased asset availability.





## How the system works

Real-time monitoring of BOPs involves monitoring sensors on the BOP control system and other key equipment to collect data on various parameters such as hydraulic pressure, solenoid/valve position, temperature, and flow rates.

The data collected from the sensors provides the ModuSpec Argus team with important information about the status and health of the BOP and other critical equipment. By continuously monitoring signals and parameters, ModuSpec's experts can quickly detect any abnormalities and engage the vessel before a major failure occurs.

ModuSpec Argus' real-time monitoring system is equipped with customizable alarms which alerts monitoring personnel when parameters exceed pre-set thresholds.

## Key features

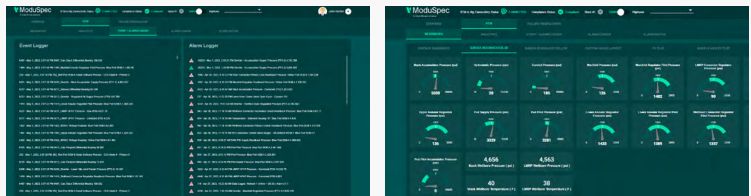
Overview screen provides at-a-glance indication of BOP and system health:

- Position indication status
- Critical readbacks
- Surface and pod hydraulic flow
- Active pod and SEM combination
- Emergency systems status



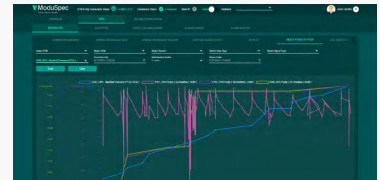
System generated event and alarm loggers which visually notify the monitoring staff to investigate and potentially initiate a failure in the Failure Propagation portion of the system

Intuitive layouts for surface, subsea blue pod, and subsea yellow pod gauges as well as a custom gauge layout



XY-Plot functionality, Multi Y axis XY Plots, and overlay plots for trending functions

- Data export for advanced analysis
- Per well and quarterly report generation
- Wellbore pressure cycle counter
- Maintenance optimization and failure prediction
- Failure propagation analysis, fault trees, and determination of compliance



24/7 monitoring support and global technical network support



CFR compliant for 14-21 day testing extension